



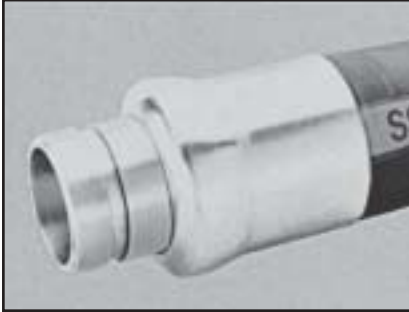
# Couplings and Accessories

Titan offers many varieties of industrial hose couplings; both built in and attachable. These couplings have been engineered to meet specific requirements. Choosing the correct coupling will provide optimum efficiency and assure worker and environmental safety. Couplings that are

attached after manufacturing must be applied per the coupling manufacturer's specifications to avoid bodily harm or property damage. Worn out fittings, clamps or straps should be checked on a regular basis and replaced as necessary. Seek the coupling manufacturer's advice to insure the proper couplings have been selected for your application.

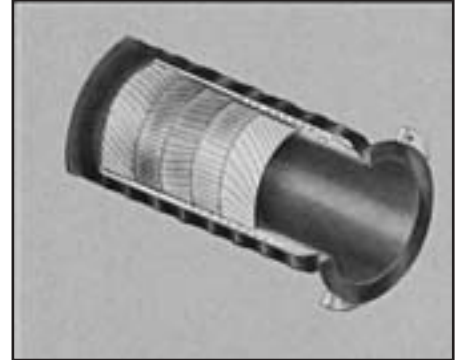
## SWAGE

This fitting consists of a stem & ferrule swaged to a hose. The ferrule is externally swaged for maximum holding power.



## ROTA-LOK

End with either Full Floating Flanges or Split Ring Flanges. A Superior design to the Old Style "Rolled Angle Ring" type Beaded End. Tube extends through nipple and up face of stub end. Full flow unrestricted transition area.



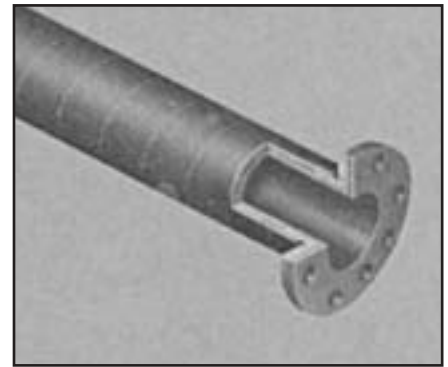
## INTERNAL EXPANSION

These fittings consist of a stem and ferrule internally expanded to the hose. The stem is internally expanded for maximum holding power.



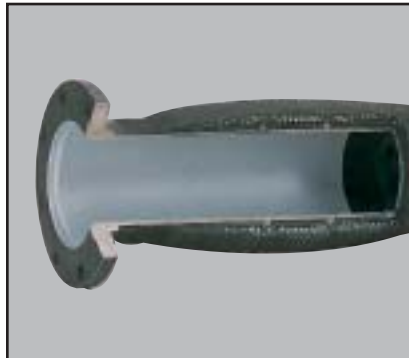
## MODIFIED B.I.R.F

A superior design to the the Duck & Rubber Flange. Hose tube extends through nipple and up face of flange, offering a full flow unrestricted transition area.



## BUILT-IN NIPPLE

Hose is built around nipple and then vulcanized for maximum holding power available in threaded, flanged, or grooved end styles.



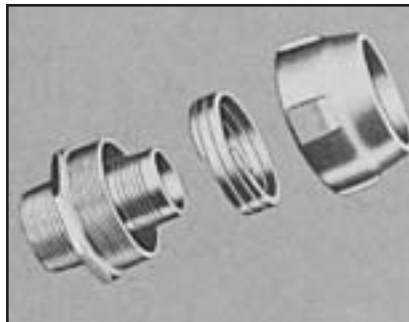
## B.I.R.F. / DUCK & RUBBER

Built-in rubber flange, also called Duck & Rubber flange. Tube and all fabric plies turn up the face of flange. Split steel back-up flange is molded to the rubber flange.



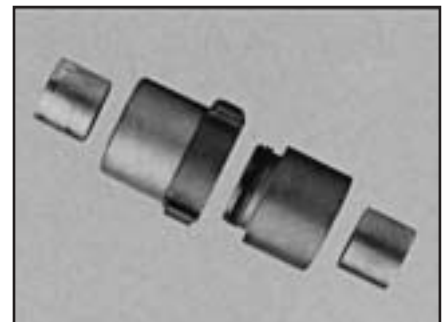
## RE-ATTACHABLE

Three-piece coupling that is mechanically attached to the hose for maximum holding strength. These couplings can be re-used.



## EXPANSION RING COUPLINGS

Couplings are offered in two styles: pin lug and rocker lug. Couplings are attached onto the hose using an expansion ring.



# C O U P L I N G S

## TIXBM INTERNALLY EXPANDED BRASS MALE

PART #	SIZE	DESCRIPTION
TIX10T-BM	1"	Brass Male Pipe with Ferrule
TIX125T-BM	1 1/4"	Brass Male Pipe with Ferrule
TIX15T-BM	1 1/2"	Brass Male Pipe with Ferrule
TIX20T-BM	2"	Brass Male Pipe with Ferrule
TIX25T-BM	2 1/2"	Brass Male Pipe with Ferrule
TIX30T-BM	3"	Brass Male Pipe with Ferrule
TIX40T-BM	4"	Brass Male Pipe with Ferrule



## TIXBF INTERNALLY EXPANDED BRASS FEMALE

PART #	SIZE	DESCRIPTION
TIX10T-BF	1"	Brass Female Pipe Thread with Ferrule
TIX125T-BF	1 1/4"	Brass Female Pipe Thread with Ferrule
TIX15T-BF	1 1/2"	Brass Female Pipe Thread with Ferrule
TIX20T-BF	2"	Brass Female Pipe Thread with Ferrule
TIX25T-BF	2 1/2"	Brass Female Pipe Thread with Ferrule
TIX30T-BF	3"	Brass Female Pipe Thread with Ferrule
TIX40T-BF	4"	Brass Female Pipe Thread with Ferrule



## RL-A ALUMINUM ROCKER LUG COUPLING

PART #	SIZE	DESCRIPTION
RL-150-A	1 1/2" x 1 15/16"	Aluminum Rocker Lug Coupling
RL-200-A	2" x 2 9/16"	Aluminum Rocker Lug Coupling
RL-250-A	2 1/2" x 3"	Aluminum Rocker Lug Coupling

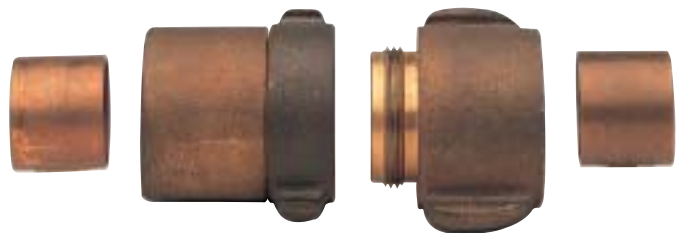
(Please specify male or female)



## RL-B BRASS ROCKER LUG COUPLING

PART #	SIZE	DESCRIPTION
RL-150-B	1 1/2" x 1 15/16"	Brass Rocker Lug Coupling
RL-200-B	2" x 2 9/16"	Brass Rocker Lug Coupling
RL-250-B	2 1/2" x 3"	Brass Rocker Lug Coupling

(Please specify male or female)



# C O U P L I N G S

PERMA-TITE COUPLERS AND ADAPTERS SWAGING/CRIMPING

New



PART C - FEMALE COUPLER HOSE SHANK

PART E - MALE ADAPTER HOSE SHANK



DC - DUST CAP



DP - DUST PLUG



NOTE: Not to be used in pressure applications.



NOTE: Not to be used in pressure applications.

The use of cam and groove couplings with today's XLPE and UHMWPE calls for greater retention. EVER-TITE's Perma-Tite™ couplers and adapters meet this requirement. Perma-Tite™ couplers and adapters are available for most common methods of permanent attachment, crimping or swaging. The use of EVER-TITE's ferrule (patent pending) or economical crimp sleeves provides one of the best connection systems available. EVER-TITE's Perma-Tite™ couplings have been tested to meet and exceed the Rubber Manufacturers Association's liquid hose pressure safety requirement of four times the working pressure without leaking.

# C O U P L I N G S

## TIXF150 SWAGED OR INTERNALLY EXPANDED 150# FIXED FLANGE END

PART #	SIZE	DESCRIPTION
TIX20F150	2"	150# Fixed Flange End with Stem & Ferrule
TIX30F150	3"	150# Fixed Flange End with Stem & Ferrule
TIX40F150	4"	150# Fixed Flange End with Stem & Ferrule
TIX60F150	6"	150# Fixed Flange End with Stem & Ferrule
TIX80F150	8"	150# Fixed Flange End with Stem & Ferrule



## TIXF300 SWAGED OR INTERNALLY EXPANDED 300# FIXED FLANGE END

PART #	SIZE	DESCRIPTION
TIX20F300	2"	300# Fixed Flange End with Stem & Ferrule
TIX30F300	3"	300# Fixed Flange End with Stem & Ferrule
TIX40F300	4"	300# Fixed Flange End with Stem & Ferrule
TIX60F300	6"	300# Fixed Flange End with Stem & Ferrule
TIX80F300	8"	300# Fixed Flange End with Stem & Ferrule



## TIXFL150 SWAGED OR INTERNALLY EXPANDED 150# FLOATING FLANGE END

PART #	SIZE	DESCRIPTION
TIX20FL150	2"	150# Floating Flange End with Stem & Ferrule
TIX30FL150	3"	150# Floating Flange End with Stem & Ferrule
TIX40FL150	4"	150# Floating Flange End with Stem & Ferrule
TIX60FL150	6"	150# Floating Flange End with Stem & Ferrule
TIX80FL150	8"	150# Floating Flange End with Stem & Ferrule



# C O U P L I N G S

## THTT SWAGED HEAT TREATED MALE

PART #	SIZE	DESCRIPTION
THT20T	2"	Heat Treated Steel Male Pipe Thread with Ferrule
THT25T	2½"	Heat Treated Steel Male Pipe Thread with Ferrule
THT30T	3"	Heat Treated Steel Male Pipe Thread with Ferrule
THT40T	4"	Heat Treated Steel Male Pipe Thread with Ferrule
THT50T	5"	Heat Treated Steel Male Pipe Thread with Ferrule
THT60T	6"	Heat Treated Steel Male Pipe Thread with Ferrule



## THTV SWAGED HEAT TREATED STEEL GROOVED END

PART #	SIZE	DESCRIPTION
THT20V	2"	Heat Treated Steel Grooved End with Ferrule
THT25V	2½"	Heat Treated Steel Grooved End with Ferrule
THT30V	3"	Heat Treated Steel Grooved End with Ferrule
THT40V	4"	Heat Treated Steel Grooved End with Ferrule
THT50V	5"	Heat Treated Steel Grooved End with Ferrule
THT60V	6"	Heat Treated Steel Grooved End with Ferrule



## THTHD SWAGED HEAT TREATED HEAVY DUTY END

PART #	SIZE	DESCRIPTION
THT20HD	2"	Heat Treated Steel H/D Calif. End with Ferrule
THT25HD	2½"	Heat Treated Steel H/D Calif. End with Ferrule
THT30HD	3"	Heat Treated Steel H/D Calif. End with Ferrule
THT40HD	4"	Heat Treated Steel H/D Calif. End with Ferrule
THT50HD	5"	Heat Treated Steel H/D Calif. End with Ferrule
THT60HD	6"	Heat Treated Steel H/D Calif. End with Ferrule



# C O U P L I N G S

## TIXT INTERNALLY EXPANDED STEEL MALE

PART #	SIZE	DESCRIPTION
TIX125T	1 1/4"	Steel Male Pipe Threads with Ferrule
TIX15T	1 1/2"	Steel Male Pipe Threads with Ferrule
TIX20T	2"	Steel Male Pipe Threads with Ferrule
TIX25T	2 1/2"	Steel Male Pipe Threads with Ferrule
TIX30T	3"	Steel Male Pipe Threads with Ferrule
TIX35T	3 1/2"	Steel Male Pipe Threads with Ferrule
TIX40T	4"	Steel Male Pipe Threads with Ferrule
TIX45T	4 1/2"	Steel Male Pipe Threads with Ferrule
TIX50T	5"	Steel Male Pipe Threads with Ferrule
TIX60T	6"	Steel Male Pipe Threads with Ferrule
TIX80T	8"	Steel Male Pipe Threads with Ferrule



NOTE: Also available in long shank style.

## TIXV INTERNALLY EXPANDED STEEL GROOVED END

PART #	SIZE	DESCRIPTION
TIX125V	1 1/4"	Steel Grooved End with Ferrule
TIX15V	1 1/2"	Steel Grooved End with Ferrule
TIX20V	2"	Steel Grooved End with Ferrule
TIX25V	2 1/2"	Steel Grooved End with Ferrule
TIX30V	3"	Steel Grooved End with Ferrule
TIX35V	3 1/2"	Steel Grooved End with Ferrule
TIX40V	4"	Steel Grooved End with Ferrule
TIX45V	4 1/2"	Steel Grooved End with Ferrule
TIX50V	5"	Steel Grooved End with Ferrule
TIX60V	6"	Steel Grooved End with Ferrule
TIX80V	8"	Steel Grooved End with Ferrule



## TIXP INTERNALLY EXPANDED BLANK WELD END

PART #	SIZE	DESCRIPTION
TIX20P	2"	Steel Blank Weld end with Ferrule
TIX25P	2 1/2"	Steel Blank Weld end with Ferrule
TIX30P	3"	Steel Blank Weld end with Ferrule
TIX40P	4"	Steel Blank Weld end with Ferrule
TIX50P	5"	Steel Blank Weld end with Ferrule
TIX60P	6"	Steel Blank Weld end with Ferrule
TIX80P	8"	Steel Blank Weld end with Ferrule



## TIXHD INTERNALLY EXPANDED H.D.END

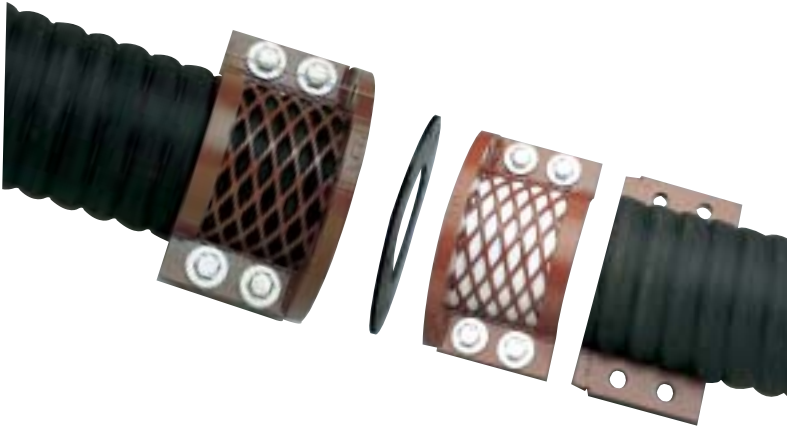
PART #	SIZE	DESCRIPTION
TIX20HD	2"	Calif.Heavy Duty End with Stem & Ferrule
TIX30HD	3"	Calif.Heavy Duty End with Stem & Ferrule
TIX40HD	4"	Calif.Heavy Duty End with Stem & Ferrule
TIX50HD	5"	Calif.Heavy Duty End with Stem & Ferrule



# C O U P L I N G S

## SPLIT-LOK FLANGE SYSTEM

Titan has developed a universal coupling system called Split-Lok. Designed for large bore material transfer hose. This two piece reusable coupling system allows the user to fabricate assemblies in the field. Our unique wire screen designed steel couplings are anti-corrosion coated and attached externally with compression bolts. As the bolts are secured in place, they provide excellent coupling retention because they are designed to match the exterior contour of either corrugated or smooth cover hose. The net result is a custom fit, full flow smooth bore coupling system that can be continuously used at 150 PSI. Available in smooth steel construction or corrugated aluminum design.



### 777S STEEL SPLIT-LOK FLANGE

PART #	SIZE	DESCRIPTION	WEIGHT
777S	4"	Steel Split-Lok Flange	14.00
777S	5"	Steel Split-Lok Flange	16.00
777S	6"	Steel Split-Lok Flange	20.00
777S	8"	Steel Split-Lok Flange	25.00
777S	10"	Steel Split-Lok Flange	35.00
777S	12"	Steel Split-Lok Flange	42.00
777S	14"	Steel Split-Lok Flange	60.00
777S	16"	Steel Split-Lok Flange	80.00
777S	18"	Steel Split-Lok Flange	90.00



### 777A ALUMINUM SPLIT-LOK FLANGE

PART #	SIZE	DESCRIPTION	WEIGHT
777A	4"	Aluminum Split-Lok Flange	1.50
777A	5"	Aluminum Split-Lok Flange	1.70
777A	6"	Aluminum Split-Lok Flange	2.00
777A	8"	Aluminum Split-Lok Flange	2.30
777A	10"	Aluminum Split-Lok Flange	2.70
777A	12"	Aluminum Split-Lok Flange	3.20
777A	14"	Aluminum Split-Lok Flange	3.70



### 777G SPLIT-LOK FLANGE GASKET

PART #	SIZE	DESCRIPTION
777G	4"	Split-Lok Flange Gasket
777G	5"	Split-Lok Flange Gasket
777G	6"	Split-Lok Flange Gasket
777G	8"	Split-Lok Flange Gasket
777G	10"	Split-Lok Flange Gasket
777G	12"	Split-Lok Flange Gasket
777G	14"	Split-Lok Flange Gasket
777G	16"	Split-Lok Flange Gasket
777G	18"	Split-Lok Flange Gasket